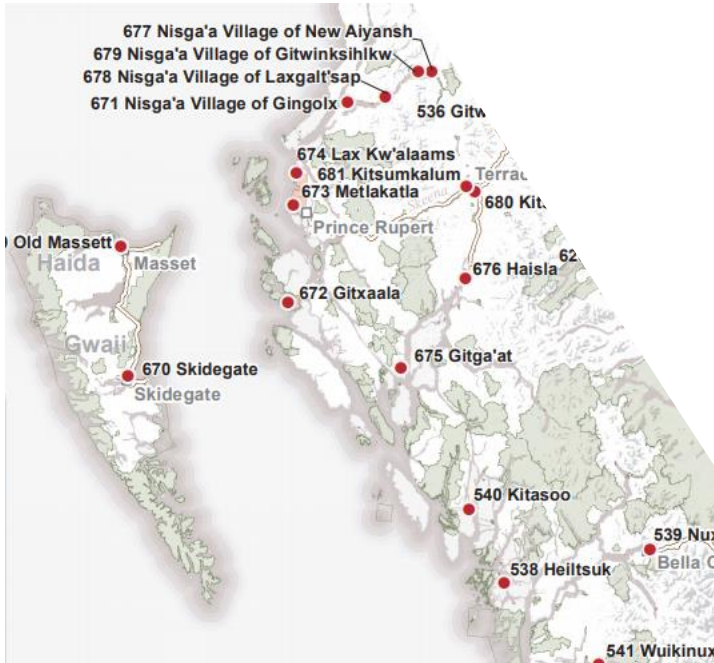


Tsunami science questions and
answers arising from recent
North Coast work

Gwyn Lintern

Geological Survey of Canada



Elder Earl Claxton Jr. looks for clams with his niece, Somaya Sawyer, 6. Photograph By ADRIAN LAM, TIMES COLONIST



The only earthquake-related deaths in Canada since records began are due to landslide generated tsunamis

Village of Kwalate Destroyed 1500

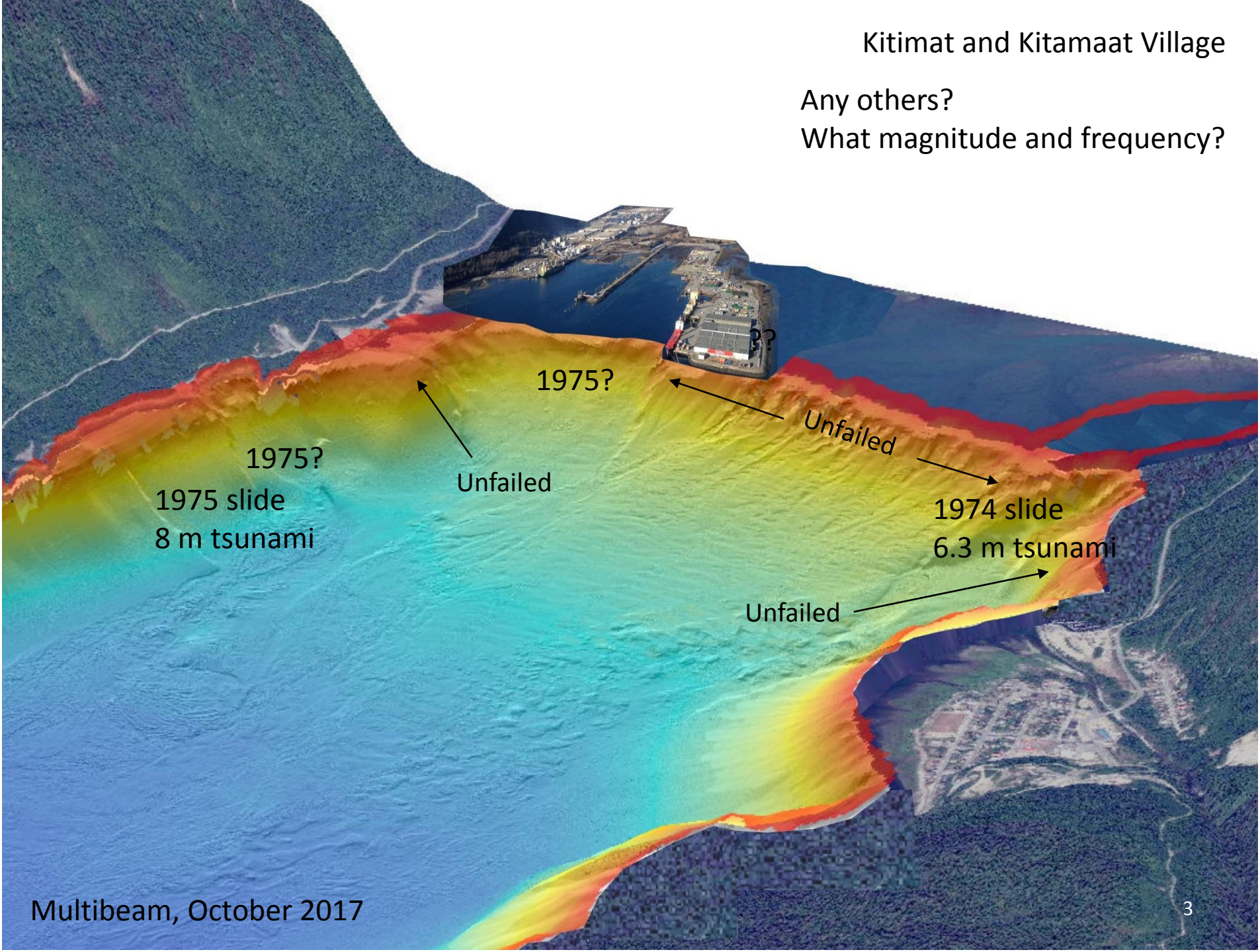
Are runup models available?

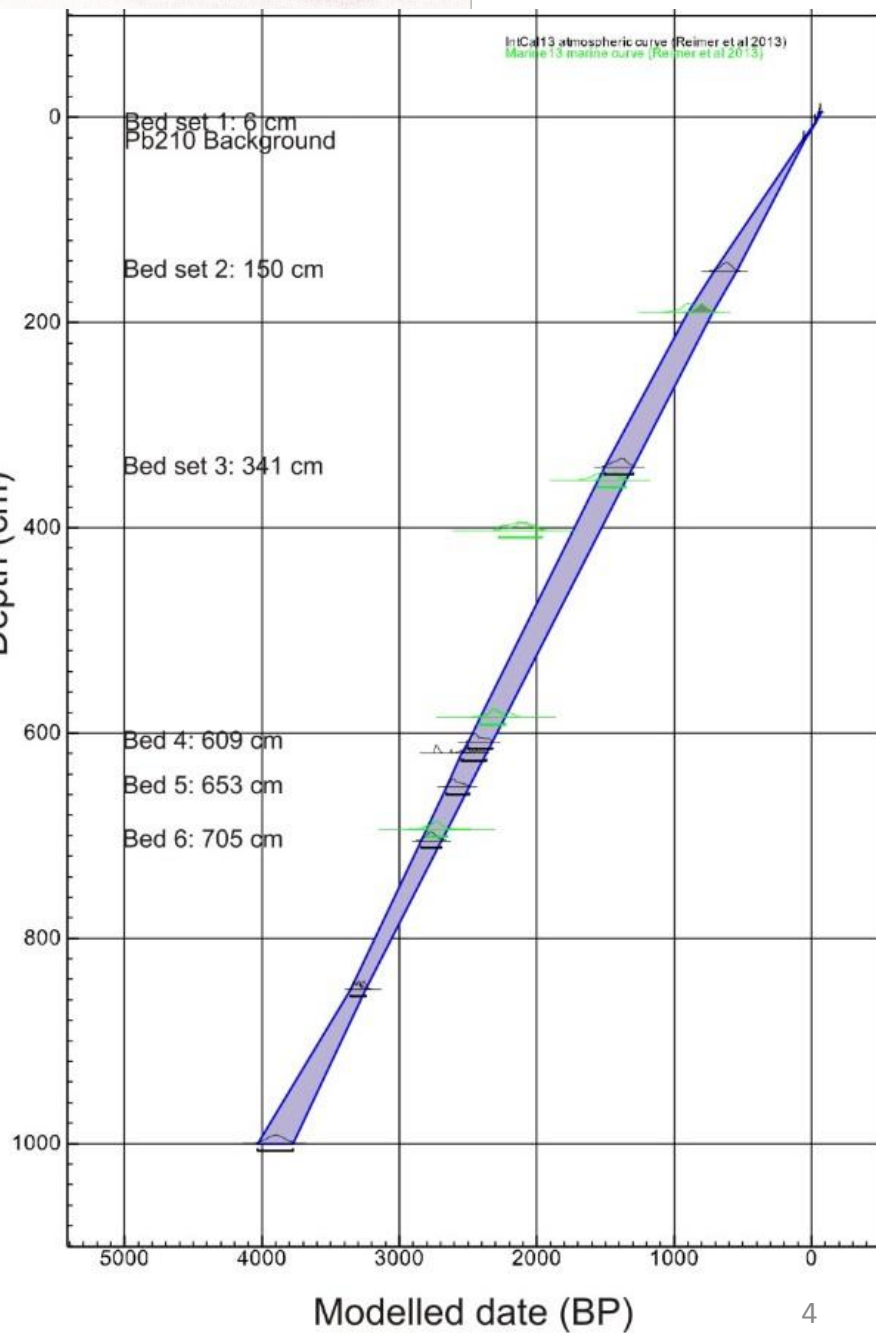
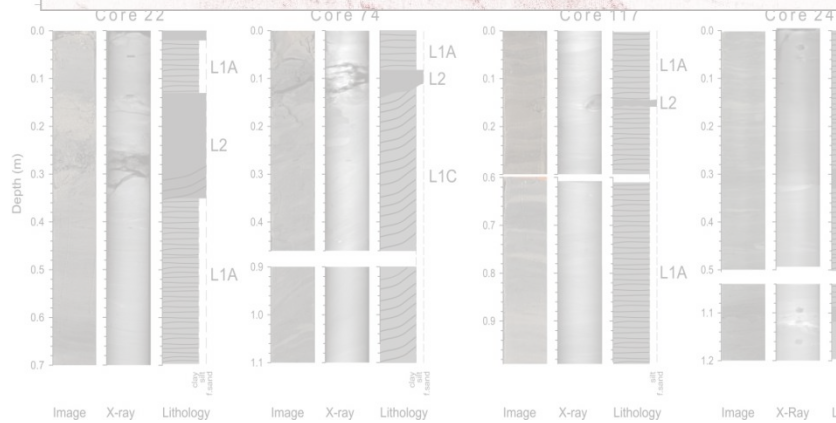
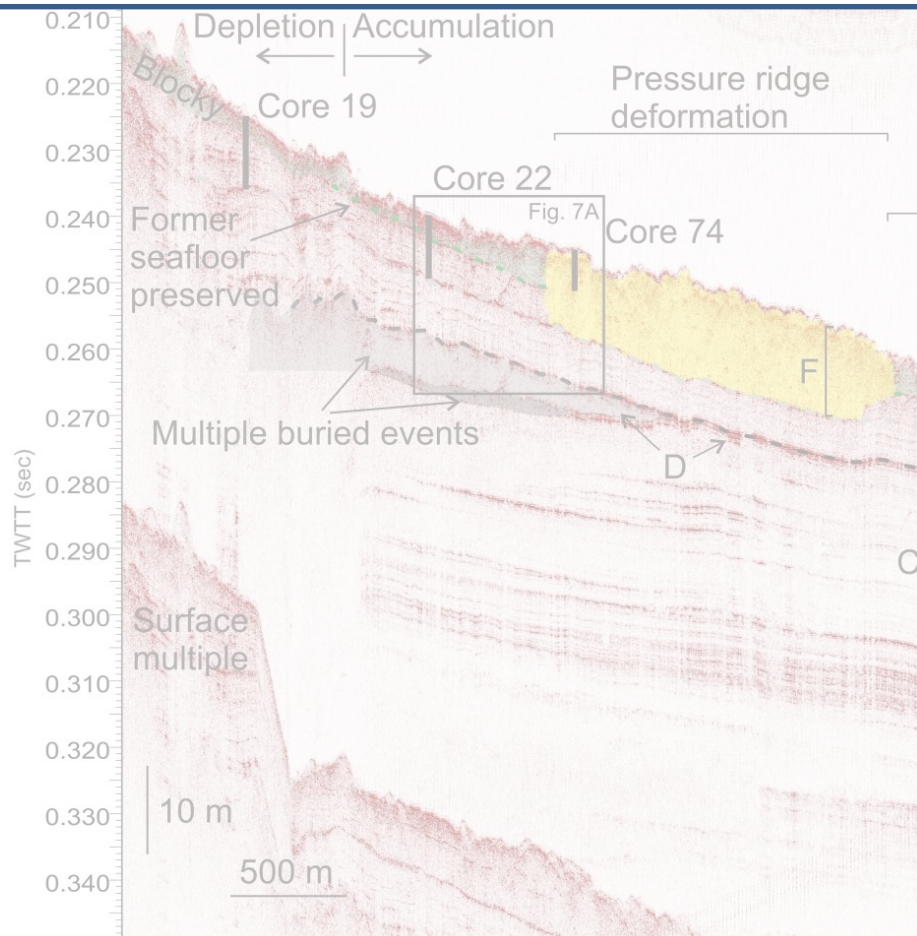
No coordination, Need guidelines

Kitimat and Kitamaat Village

Any others?

What magnitude and frequency?

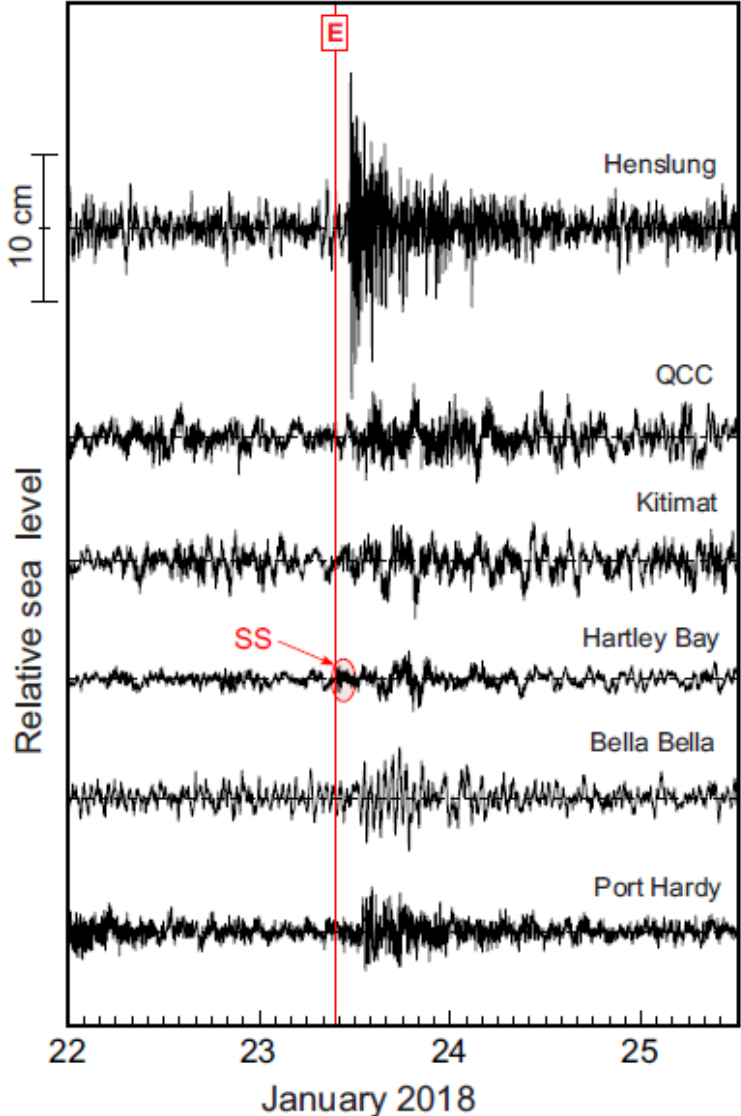




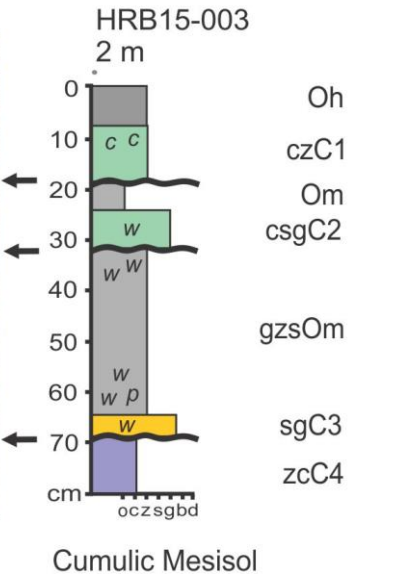
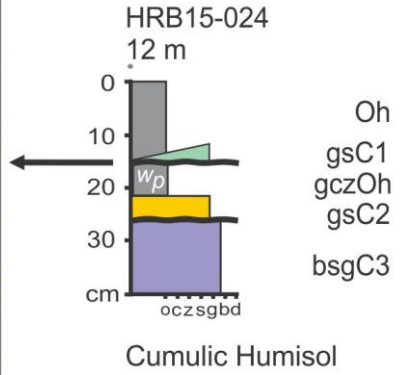
How can we verify the models?

Tsunamis

2018 Alaska (Kodiak) Earthquake ($M_w = 7.9$)
North British Columbia

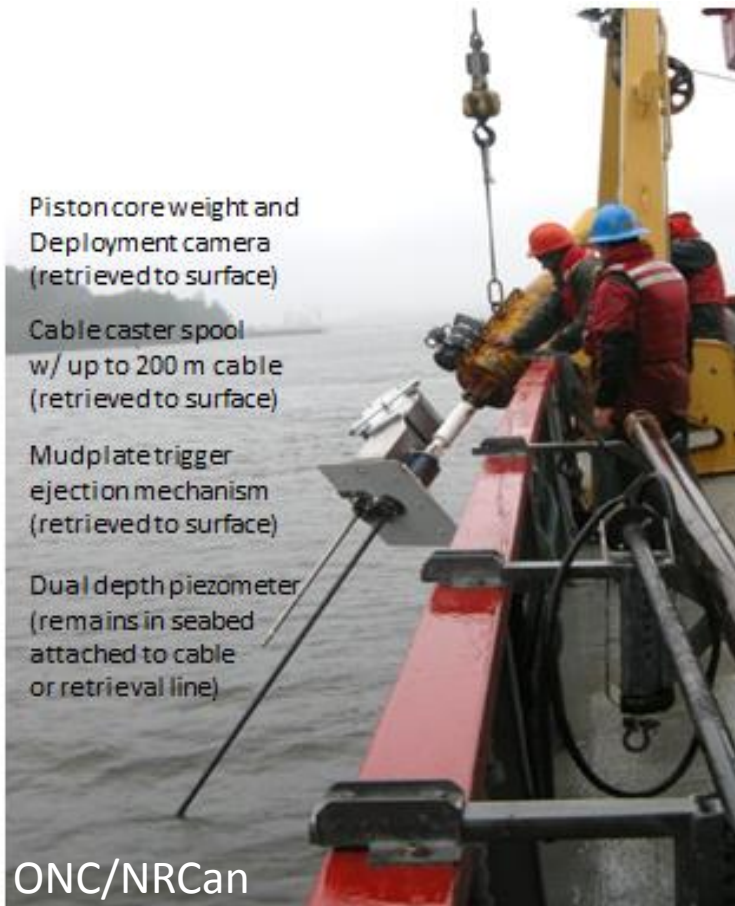


Deposits



Are there early warning technologies available For local generated tsunamis (slope failures) Long range predictions?

Live subsea piezometers



Live submarine landslide and
pressure measuring stations



